

LMECA R&D

ADVANCED CLINICAL APPLICATIONS



Portable Automatic Suction System



BY REPLACING MANUAL SUCTIONING WITH AUTOMATED TECHNOLOGY, WE SIGNIFICANTLY REDUCE RESPONSE TIMES, ENSURE CONSISTENT AND EFFECTIVE SUCTIONING, AND ULTIMATELY IMPROVE PATIENT OUTCOMES.

USING THE SAME CORE TECHNOLOGY AS THE A-1000 DEVICE, THIS INNOVATION REPRESENTS THE MOST ADVANCED EMERGENCY SUCTION SYSTEM FOR RESPIRATORY TRAUMA PATIENTS.

LMECA A-2000 Prototype



Expected CE Approval: 2025 Q3

Pediatric Catheter System



OUR PEDIATRIC CATHETER SYSTEM, DESIGNED SPECIFICALLY FOR USE WITH OUR AUTOMATIC SUCTION DEVICE, OFFERS UNPARALLELED SAFETY AND COMFORT FOR OUR YOUNGEST PATIENTS.

BY INTEGRATING SEAMLESSLY WITH AUTOMATIC SUCTION TECHNOLOGY, THIS CATHETER SYSTEM MINIMIZES THE RISK OF INJURY AND DISCOMFORT, ENSURING EFFICIENT AND GENTLE SUCTIONING TAILORED TO PEDIATRIC NEEDS.

Pediatric Closed Catheter for Ai Suction



Expected CE Approval: 2026 Q2

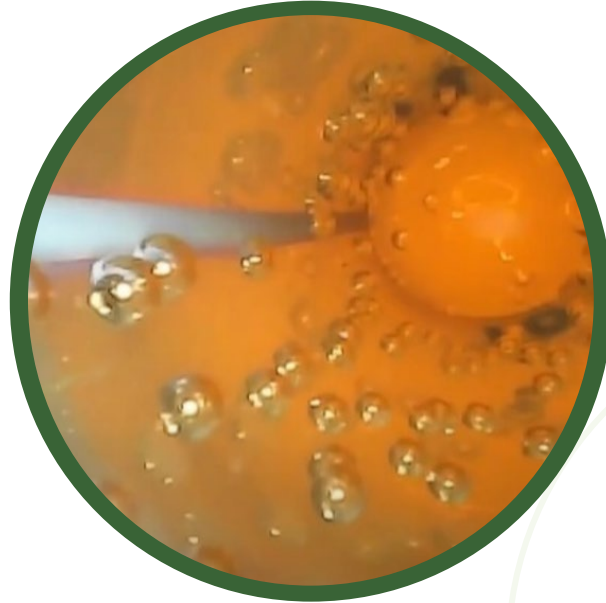
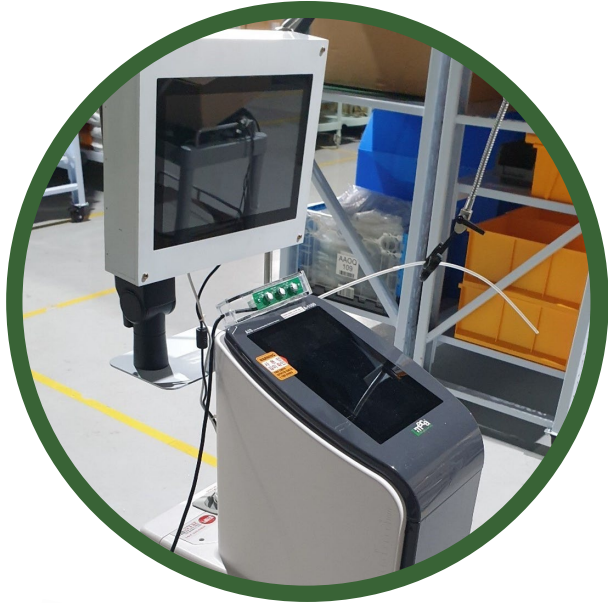
Artificial Intelligence Bronchoscopy



AUTOMATIC BRONCHOSCOPE SPUTUM ANALYSIS, POWERED BY ARTIFICIAL INTELLIGENCE IS A GAMECHANGER.

BY PROCESSING SPUTUM IMAGES TO IDENTIFY RESPIRATORY SPUTUM CHARACTERISTICS, THE SUCTION DEVICE CAN DYNAMICALLY ADJUST SUCTION SETTINGS TO OPTIMAL LEVELS, ENSURING THOROUGH AND EFFICIENT REMOVAL WITHOUT MANUAL INTERVENTION.

LMECA A-3000 Prototype



Expected CE Approval: 2027 Q4

Find out more...

CHECK OUT OUR WEBSITE AT:
WWW.LMECA.CO.KR

